

# MUSIC

*at* EPIPHANY

2024 - 2025 Season



CONCERTS

CHORAL EVENSONG

SPECIAL CHORAL SERVICES

MUSIC PROGRAMS

**EPIPHANY SEATTLE**

1805 38th Avenue  
Seattle, WA 98122

[EpiphanySeattle.org](http://EpiphanySeattle.org)

## THE REV. DOYT L. CONN, JR RECTOR

I write you with gratitude in my heart, knowing that a great many things will have passed through our common life between when these words become ink on paper and when you read them. This document, after all, is meant to have shelf life, and yet, the world does not remain static. Change is a constant, which is a trope we're all familiar with, but it seems change is accelerating at a pace never before experienced.

Which is why Music at Epiphany exists. Under the leadership of Zach Hemenway, our Director of Music, and made possible by private financial donations from people like you, we seek to access the ancient waters of choral and Baroque music to transcend the moment and be reminded that we exist within a community that is bigger than the limitations of time and place. Music evokes the metaphysics of beauty, and, as Fyodor Dostoevsky wrote in his novel *The Idiot*, "it is beauty that will save the world." Music at Epiphany seeks to perpetuate that beauty.

It is a beauty lived out not only in the music, but also the community gathered in a sacred space, experiencing the same thing at the same time. In this way a common meditation emerges, revealing a mysterious union that nurtures the soul.

May beauty be enlivened and your soul nurtured through the experiences supported by you through Music at Epiphany.

Peace be upon your soul.

Doyt+



## ZACH HEMENWAY DIRECTOR OF MUSIC

Welcome to Music at Epiphany's 2024-2025 Season!

I am thrilled to share Music at Epiphany's third season with you. Our mission remains to strive for excellence in sacred music, both in worship and concert settings, and to be a center of music for Seattle and the broader community.

Epiphany is truly a special place for making music. Though modest in size, our venue provides a warm and supportive acoustic for both choral and instrumental music, especially music of the Baroque era. Each Sunday, we offer three worship services that include high-caliber choral music, most notably at Choral Evensong at 5:30 pm. Our concerts bring together our internationally regarded choir with some of the finest soloists and instrumentalists from across the United States. Our recently re-started chorister program provides children with the opportunity to sing in such performances, and the Epiphany Music Academy has become a center of musical learning for Madrona and our surrounding neighborhoods.

All of this is made possible by people - not by buildings - and it is you who achieve this work. Whether you are a donor, a concert attendee, a performer, a volunteer, an Epiphany parishioner, or a member of the wider community, I am deeply grateful for your presence, support, and generosity. In the end, music is meant to communicate something, and in order to communicate anything, there must be human connection and relationship. This is why we believe in achieving excellence in music through excellence in relationship.

This brochure outlines the breadth of what our choral program, concert series, and music academy offer our community, and I hope that you will find something that engages you. If you are new, I invite you to join us. If you are already familiar with Music at Epiphany, I invite you to consider introducing others to our work.

Thank you,  
Zach Hemenway



## MUSIC AT EPIPHANY STAFF

**Zach Hemenway**  
Director of Music  
zhemenway@epiphanyseattle.org

**Laura Sargent**  
Music Department Coordinator  
lsargent@epiphanyseattle.org

**John Garlid**  
Music Administrator  
music@epiphanyseattle.org

**Kathea Yarnell**  
Epiphany Music Academy  
info@epiphanymusicacademy.org

## MUSIC AT EPIPHANY BOARD

Sherman Griffin, *Chair*  
Zach Hemenway  
Craig Miller  
Laurel Nesholm  
Mary Lee Peters  
Laura Sargent  
John Starbard

# CALENDAR AT-A-GLANCE

**Sunday, September 8 | 5:30 pm**  
**First Evensong of the Season**

**Friday, October 25 | 7:30 pm**  
**Requiem: Duruflé and Howells**  
*Tickets: [www.epiphanyseattle.org/concerts](http://www.epiphanyseattle.org/concerts)*

**Sunday, November 3 | 5:30 pm**  
**Requiem by Gabriel Fauré**  
Fauré's famous requiem in the context of worship

**Wednesday, November 6 | 7:30 pm**  
**Taizé**  
Meditation, chant, and prayer by candlelight

**Sunday, December 8 | 5:30 pm**  
**Advent Carol Service**  
A service of readings and anthems by candlelight

**Friday & Saturday, December 13-14 | 7:30 pm**  
**Handel's Messiah**  
Handel's masterpiece performed with  
Baroque orchestra  
*Tickets: [www.epiphanyseattle.org/concerts](http://www.epiphanyseattle.org/concerts)*

**Sunday, December 22 | 5:30 pm**  
**Christmas Lessons and Carols**  
As famously sung at King's College, Cambridge

**Tuesday, December 24 | 6, 9, & 11 pm**  
**Christmas Eve Choral Services**  
Join us in celebrating the birth of Christ

**Monday, January 6 | 7:30 pm**  
**The Feast of the Epiphany**  
Festal Eucharist & celebration for our parish feast day

**Friday, February 28 & Saturday, March 1 | 7:30 pm**  
**Fit For A Queen: Music of Handel & Purcell**  
*Tickets: [www.epiphanyseattle.org/concerts](http://www.epiphanyseattle.org/concerts)*

**Tuesday, April 15 | 7:30 pm**  
**Taizé**  
Meditation, chant, and prayer by candlelight

**Wednesday, April 16 | 7:30 pm**  
**Tenebrae**  
Including Gregorio Allegri's famous *Miserere*

**Sunday, April 20 | 8:45 & 11:00 am**  
**Easter Day**  
Festal Eucharist with choir and brass

**Friday, May 9 | 6:30 pm**  
**Music at Epiphany 2025 Fundraising Celebration**  
*More details at [www.epiphanyseattle.org/music](http://www.epiphanyseattle.org/music)*



# CONCERTS



*Charles Robert Stephens*



*Joseph Adam*



*Sarah Larkworthy*

## **REQUIEM: DURUFLÉ AND HOWELLS**

**Friday, October 25 | 7:30 pm**

*Tickets \$38 - available at*

*[www.epiphanyseattle.org/concerts](http://www.epiphanyseattle.org/concerts)*

The Epiphany Choir will join with Seattle Symphony organist Joseph Adam to present two contrasting requiem settings. Perhaps one of the most beautiful settings of the requiem text, Maurice Duruflé's setting features sweeping and emotive writing for choir and orchestra and a virtuosic organ part. In contrast, Howells' setting is not strictly taken from the official requiem text, but is his own compilation of texts for unaccompanied choir, known for its haunting lines and lush harmonies. The concert will also include Josef Rheinberger's rarely-performed yet stunning *Organ Concerto No. 2*, which is always a crowd pleaser. Acclaimed local baritone Charles Robert Stephens and mezzo-soprano Sarah Larkworthy will be soloists.



## HANDEL'S MESSIAH

Friday, December 13 & Saturday, December 14 | 7:30 pm

Tickets: \$45 - available at [www.epiphanyseattle.org/concerts](http://www.epiphanyseattle.org/concerts)

Music at Epiphany presents two nights of George Frideric Handel's famous oratorio, *Messiah*, performed by an all-star Baroque orchestra under the direction of Zach Hemenway. The Epiphany Choir will be joined by four outstanding soloists and period instruments in the warm acoustics of Epiphany for this presentation of a holiday favorite. Clara Rottsoik, soprano; Kirsten Solleck, contralto; Lawrence Jones, tenor; Zachary Lenox, bass.

## FIT FOR A QUEEN: MUSIC OF HANDEL & PURCELL

Friday, February 28 & Saturday, March 1 | 7:30 pm

Ticket : \$38 - available at [www.epiphanyseattle.org/concerts](http://www.epiphanyseattle.org/concerts)

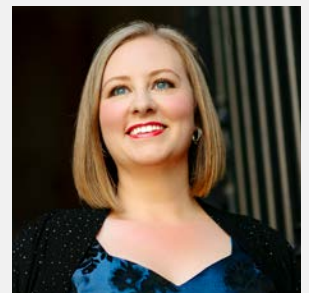
Featuring G.F. Handel's *Birthday Ode for Queen Anne* and Henry Purcell's *Birthday Ode for Queen Mary (Come, ye sons of art)*, this concert will satisfy whatever wish you have. Splashy and celebratory choruses? Present. Lighthearted Duets? Present. Stunningly beautiful solo lines? Present. So beautiful, in fact, that the first movement of Handel's ode, *Eternal Source of Light Divine*, has been sung at numerous royal occasions, including most recently at the wedding of Meghan Markle and Prince Harry. The evening will be rounded out with Correlli's much-beloved *Concerto Grosso No. 8 in g minor*. Danielle Reutter-Harrah, soprano; Jay Carter, countertenor; José Luis Muñoz, countertenor.



Lawrence Jones



Kirsten Solleck



Clara Rottsoik



Zachary Lenox



Jay Carter



José Luis Muñoz



Danielle Reutter-Harrah

# THE EPIPHANY CHOIR

## COMMUNITY THROUGH SERVICE AND MUSIC

The Epiphany Choir is made up of adults and high school singers, both volunteers and professionals. The choir sings three services a week, including two Sunday morning Eucharist services, as well as Choral Evensong on Sunday evening. Each member of the choir minimally commits to sing at a weekly Sunday morning service and one Evensong per month. The choir also sings at holiday services throughout the year, performs concerts, and sings in the community. Rehearsals are held on Thursdays from 7:30-9:30 pm from September through May. Most services are live streamed and a weekly Evensong at Epiphany podcast is produced. In 2023, the choir toured in England, spending two weeks in residence at St. Paul's Cathedral, London, and Durham Cathedral.

The Epiphany Choir is a shining example of what is possible with hard work and deep relationships. Its primary role is to support and enhance worship, and it works diligently to make a beautiful offering to God. Epiphany has a deep commitment to being a place for choral and liturgical excellence, and the choir's active ministry is a key part of parish life.

New members are always welcome to join this active, fun, and caring community of singers. Requirements to join the choir are a strong commitment to the choir schedule, a basic knowledge of music, a good ear, and a desire to be a team player. You do not have to be a member of Epiphany or the Episcopal Church to join.

For more information, contact:  
**Laura Sargent,**  
**Music Department Coordinator**  
[lsargent@epiphanyseattle.org](mailto:lsargent@epiphanyseattle.org)





# SPECIAL SERVICES AT-A-GLANCE

**Sunday, November 3 | 5:30 pm**

**Requiem by Gabriel Fauré**

Fauré's famous Requiem setting sung  
in the context of worship

**Wednesday, November 6 | 7:30 pm**

**Taizé**

Meditation, chant, and prayer by  
candlelight

**Sunday, December 8 | 5:30 pm**

**Advent Carol Service**

A service of readings and anthems  
by candlelight

**Sunday, December 22 | 5:30 pm**

**Christmas Lessons and Carols**

As famously sung at King's College,  
Cambridge

**Tuesday, December 24 | 6:00, 9:00,  
& 11:00 pm**

**Christmas Eve Choral Services**

Join us in celebrating the birth of  
Christ

**Tuesday, April 15 | 7:30 pm**

**Taizé**

Meditation, chant, and prayer by  
candlelight

**Wednesday, April 16 | 7:30 pm**

**Tenebrae**

including Gregorio Allegri's famous  
*Miserere*

**Sunday, April 20 | 8:45 & 11:00 am**

**Easter Day**

Festal Eucharist with choir and brass

# SPECIAL CHORAL SERVICES



## THE FAURÉ REQUIEM

**Sunday, November 3 | 5:30 pm**

The Epiphany Choir will sing Gabriel Fauré's *Requiem* in remembrance of all who have departed this life. Experience the transcendent beauty of this timeless masterpiece that captures the essence of solace and serenity in its original context: the Mass. Whether you are a seasoned classical music enthusiast or a newcomer to the genre, this mesmerizing choral work is sure to leave an impression on your soul.

## TAIZE

**Wednesday, November 6 | 7:30 pm**

Join the Epiphany Choir for a music-filled service of reflection the day after the election. This Taizé service features chants, readings, prayers, and candle lighting.

## ADVENT CAROL SERVICE

**Sunday, December 8 | 5:30 pm**

A candlelit service of scripture and music to prepare for the coming of Christ. This service includes favorite Advent carols and choral music sung by the Epiphany Choir from various locations in the church. Early seating is advised.

## CHRISTMAS LESSONS AND CAROLS

**Sunday, December 22 | 5:30 pm**

Following the pattern of the traditional service of Nine Lessons and Carols, made famous by King's College, Cambridge, the Epiphany Choir will offer a celebration of favorite Christmas carols and anthems. Early seating is advised. A festive reception will follow the service in the Great Hall.



# SPECIAL CHORAL SERVICES



## CHRISTMAS EVE

Tuesday, December 24 | 6:00, 9:00, & 11:00 pm

Join the people of Epiphany in celebrating the birth of Jesus. Filled with singing and concluding with “Silent Night” in a darkened church, we hope these services will bring peace and joy to your Christmas celebration.

## TAIZÉ

Tuesday, April 15 | 7:30 pm

Join the Epiphany Choir for a music-filled service of reflection on the Tuesday of Holy Week. This annual Taizé service features chants, readings, prayers, and candle lighting.

## TENEBRAE

Wednesday, April 16 | 7:30 pm

Latin for “Darkness,” Tenebrae is an ancient service in which the church grows increasingly dim as the congregation meditates on the final hours of Christ’s life during Holy Week. Epiphany’s professional level choir chants psalms and sings anthems including Gregorio Allergi’s famous *Miserere*.

## EASTER DAY

Sunday, April 20 | 8:45 & 11:00 am

Join Epiphany in celebrating the resurrection of Christ. The Epiphany Choir will join with brass to offer joyful hymns and anthems.

# CHORAL EVENSONG AT EPIPHANY

Sung every Sunday at 5:30pm

Sung at the close of day in cathedrals and churches throughout the world, Choral Evensong is a service of Evening Prayer, derived from the ancient offices of Vespers and Compline. The choir sings the traditional evening prayers of the Church that have been offered for centuries, while the congregation listens, joins in the hymns, and adds their own prayers to those of the choir.

Evensong is part of a pattern of worship which is offered by people throughout the world every single day of the year. When you come to Evensong at Epiphany, it is as if you were dropping in on a conversation already in progress which began long before you were born and will continue long after you are dead.

Epiphany is one of very few churches in the United States where Choral Evensong is sung weekly year round. The 45-minute sung service is an opportunity for peaceful meditation as you prepare to start a new week. While the pattern of the service is always the same, Epiphany's exceptional Evensong Choir offers different repertoire each and every week. Depending on the week, you may hear ancient music written hundreds of years ago or works by living composers, some of whom are present in the room. Consider joining us for one of Seattle's best kept choral secrets.

Evensong is funded by Music at Epiphany.



## EVENSONG LIVESTREAM & PODCAST

Choral Evensong at Epiphany can also be viewed on YouTube and listened to on your favorite podcasting platform. Please visit [www.epiphanyseattle.org/evensong](http://www.epiphanyseattle.org/evensong) to learn more or scan this QR code:





Every Sunday  
at 5:30pm



**WANT TO KNOW WHAT  
THE EPIPHANY CHOIR  
IS SINGING?**

You can access our music list at  
[www.epiphanyseattle.org/music](http://www.epiphanyseattle.org/music)  
or at this QR code:



# MUSIC FOR CHILDREN

The Epiphany chorister program is open to children ages 8 and up. Our young singers receive exceptional training in music, have fun in the process, and become part of a thriving community made up of both children and supportive adults. While choristers sing in worship services at Epiphany, choristers do not have to be a member of Epiphany or the Episcopal church to participate. Children and families of any religious affiliation, or none, are warmly welcomed.

## OUTSTANDING MUSICAL EDUCATION

While we sing as a group, we stress the musical development of each individual musician. Every week, choristers receive free training in vocal technique and music reading skills, giving each child the foundation for a lifetime of performance and enjoyment of music.

## LIFE SKILLS

Beyond musical proficiency, our program instills essential life skills in our choristers. Teamwork, discipline, focus, and respect for others are the cornerstones of a successful choir. By singing and working together, our Choristers develop leadership skills and learn the value of consistently working toward a long-term goal. These life skills extend far beyond the choir room, benefiting our choristers in various aspects of their lives.

## EXCEPTIONAL MUSIC

Our choirs are rooted in the Anglican choral tradition, like that of Westminster Abbey. Choristers are exposed to a wealth of repertoire spanning a variety of styles, periods, and cultures. On select Sundays throughout the year, Choristers sing in services, joining with Epiphany's internationally regarded Adult Choir, which includes many of the best professional and volunteer singers in Seattle.

## EPIPHANY MUSIC ACADEMY SCHOLARSHIPS

Epiphany Choristers can study piano, or another instrument, through the Epiphany Music Academy. Full scholarships are available for those who demonstrate a need and make a strong commitment to the chorister program.

## WHO CAN JOIN?

Choristers is open to children and youth ages 8 and up who have an eagerness to learn, age-appropriate reading proficiency, and commitment to the choir schedule. All are welcome regardless of musical background and religious affiliation.

To learn more about Choristers, contact  
**Laura Sargent at [lsargent@epiphanyseattle.org](mailto:lsargent@epiphanyseattle.org).**



# EPIPHANY MUSIC ACADEMY

[www.epiphanymusicacademy.org](http://www.epiphanymusicacademy.org)

The Epiphany Music Academy offers individual lessons and music classes for children and adults. Our faculty is composed of excellent music teachers, each well-known in their field for performance, teaching, and education.

## INDIVIDUAL LESSONS ARE AVAILABLE IN:

Voice, piano, guitar, violin, cello, flute, oboe, bassoon, trumpet, bass (upright & electric), ukulele, cello, harpsichord, and organ.

Let's Explore Music! group classes are offered year-round for kids ages 2-8! New sessions start every 6 weeks.

## WHY THE EPIPHANY MUSIC ACADEMY?

Epiphany Music Academy students receive expert instruction from some of the best teachers in Seattle on Epiphany's beautiful campus. They also get the opportunity to join in Academy recitals. Most importantly, students grow in a supportive environment where they are challenged and can cultivate a lifelong love of music.

You can learn more and sign up for lessons by visiting our website: [www.epiphanymusicacademy.org](http://www.epiphanymusicacademy.org) or by emailing [info@epiphanymusicacademy.org](mailto:info@epiphanymusicacademy.org)



## INSTRUMENTAL LESSON SCHOLARSHIPS

Scholarships for instrumental study at the Epiphany Music Academy are available to Epiphany Choristers. We are fortunate to have the Epiphany Music Academy on our campus, giving our Choristers access to world-class faculty and a variety of instruments. Scholarships are funded by Music at Epiphany, and preference is given to those for whom the cost of instrumental study would be a challenge.



# SAVE THE DATE!

## MUSIC AT EPIPHANY 2025 FUNDRAISING CELEBRATION

Friday, May 9 at 6:30 pm

All are invited to join us for an evening of music and community building to support the work of Music at Epiphany. Come celebrate the completion of our 2024-2025 season, enjoy a special performance, and learn about our plans for the 2025-2026 season. Full details will be available on our website: [www.epiphanyseattle.org/music](http://www.epiphanyseattle.org/music).



# SUPPORT OUR WORK

While concert ticket sales provide some revenue, Music at Epiphany is primarily supported by the generosity of our donors - both within Epiphany Parish and music lovers in the wider Seattle community. Music at Epiphany is also supported by the parish's general operating budget. The combination of these sources enable us to continue to provide all of our musical offerings and hire necessary staff.

Gifts to Music at Epiphany are tax-deductible and are not used by Epiphany Parish for any other purpose. Your donations directly fund our concert series, the music academy, and our exceptional choir. Gifts of any size are greatly appreciated.

## TO DONATE TO MUSIC AT EPIPHANY:

**Check or money order:** payable to Epiphany Parish  
memo: Music at Epiphany

**Give online:** [www.onrealm.org/epiphanyseattle/give/music](http://www.onrealm.org/epiphanyseattle/give/music)

Wish to discuss a donation?

Please contact: **Sherman Griffin, Board Chair,**  
[music@epiphanyseattle.org](mailto:music@epiphanyseattle.org)



Financial donations are not the only way you can support Music at Epiphany. You can also support us by volunteering for concerts and music events, or even by sharing the word about us. If you are interested in supporting this work, contact Laura Sargent, Music Department Coordinator, at [lsargent@epiphanyseattle.org](mailto:lsargent@epiphanyseattle.org).

Support us on Facebook and Instagram

 [@musicatepiphany](https://www.instagram.com/musicatepiphany)

 [www.facebook.com/epiphanyseattlemusic](https://www.facebook.com/epiphanyseattlemusic)



Epiphany Parish of Seattle  
1805 38th Avenue, Seattle, WA 98122

Non-Profit Org.  
U.S. Postage  
PAID  
PERMIT NO. 1429  
Seattle, WA

